

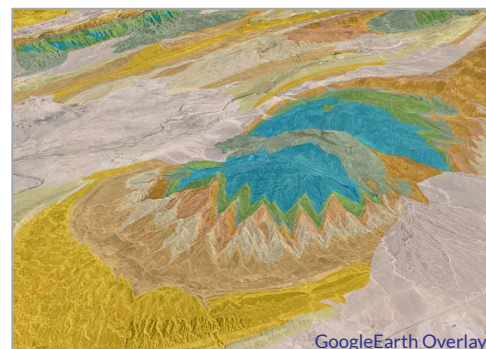
Zagros Geological Maps & Cross-Sections

Product Summary

Drawn from our extensive in-country experience, these are the most comprehensive, structurally valid, vector-based Zagros geological maps available.

Map layers showing stratigraphy and structure for the entire Zagros range are ready for import into ArcGIS, GoogleEarth, Petrel, GoCad or your favourite G&G software. Featuring our high resolution ZOOM data (Zagros Outcrop Oriented Mapping) for the northern Zagros, based on years of field mapping throughout the region.

Sub-surface interpretation is richly illustrated with a series of 16 regional balanced cross-sections. Our stratigraphic correlation chart also includes surrounding regions in NE Syria, Saudi Arabia, UAE and Oman.



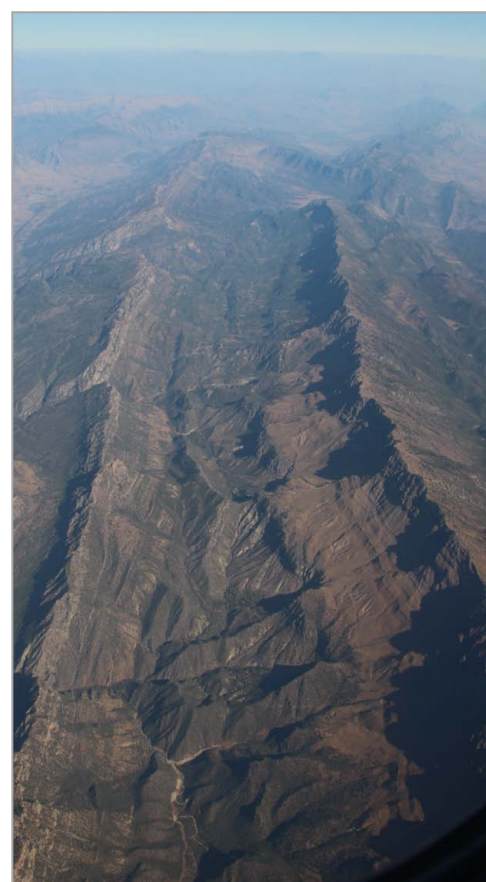
Direct Relevance to E&P Challenges

The outputs of the study are specifically aimed to provide you with:

- Seamless integration of detailed geological maps and cross-sections within industry standard software packages.
- Analysis of structural styles and detailed location of formations across the entire Zagros.
- New insight from consistent re-interpretation of the formations and structures across the entire Zagros, based on first hand field work, integration of pre-existing maps and literature data sources, and use of high-resolution satellite image data.

Product Series	GRL "ZOOM"	GRL "ZRM"
Zagros sectors	A, B (Northern Zagros)	C, D (Central & Southern Zagros)
Primary data source	Extensive fieldwork & analysis of detailed satellite imagery	Satellite imagery + georeferenced field data & geological maps
Equivalent minimum spatial resolution	QB/SPOT+ (1-10m)	Landsat/ASTER (~15-30m)
Map deliverables	Structural elements (polylines), lithostratigraphic horizons (polylines), Solid-fill lithostratigraphy (polygons), extra structural meta-data, Regional tectonic & geodynamic elements, cover delineated (polygons)	
Balanced cross-sections	5	11
Type localities (points)	✓	✓
Bed dip data (points)	✓ (detailed)	✓ (overview)
Stratigraphic correlation	✓	✓

Summary table of product content by sector. The sectors are separated into those based on detailed outcrop based mapping ("ZOOM") and those derived from satellite image analysis and legacy data ("ZRM").



Pricing (single company, corporate licence)

Sector A: Turkey southeast, Syria northeast

Sector B: Iraq north & northeast, Kurdistan

Sector C: Iraq southeast, Iran west (Lurestan, Dezful, Khuzestan)

Sector D: Iran southwest (Fars, Hormoz), The Gulf, Oman north

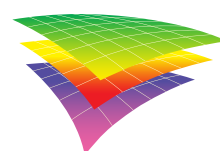
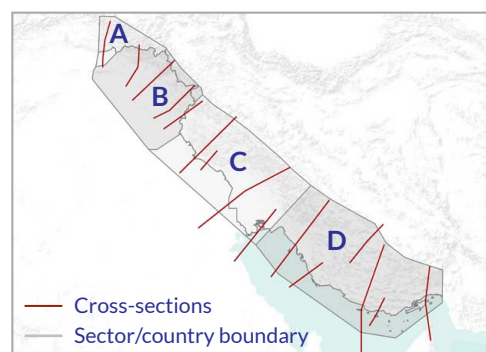
All sectors combined: A+B+C+D

All prices exclusive of VAT

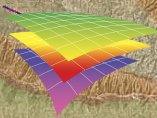
Discounts available when purchased in combination with other GRL products and services.

Licenses permit use for 25 years and are non-transferable. Licensed data are strictly for use by bona fide employees of the named licensee companies, and cannot be shown, given or passed by any means to other companies or organisations, including energy, service, consultancy or other entities without the express permission of GRL.

*contact
us for
pricing
information*



**Geospatial
Research
Limited**



Zagros Mapping

Integrated Geoscience from Fieldwork, Satellite and Sub-Surface Data

ArcMap Shapefiles

Product Details

Our mapping and cross-sections are based on a complete ground-up re-appraisal of mapping and cross-sections for the entire Zagros. Interpretations are made within the context of our wide-ranging outcrop-to-regional scale knowledge of deformation styles and mechanical properties of Zagros stratigraphy.

Mapped stratigraphic units are assigned local formation names appropriate to each country, with seamless topology across the international boundaries. Also included is a stratigraphic correlation chart that compares formation names across ten regions of the Zagros and neighbouring areas.

Description of the interplay between styles of deformation and mechanical stratigraphy are included in the accompanying report, together with discussion of implications for exploration.

For maximum versatility we've divided the Zagros into four sectors, each available for individual licensing or as a discounted bundle.

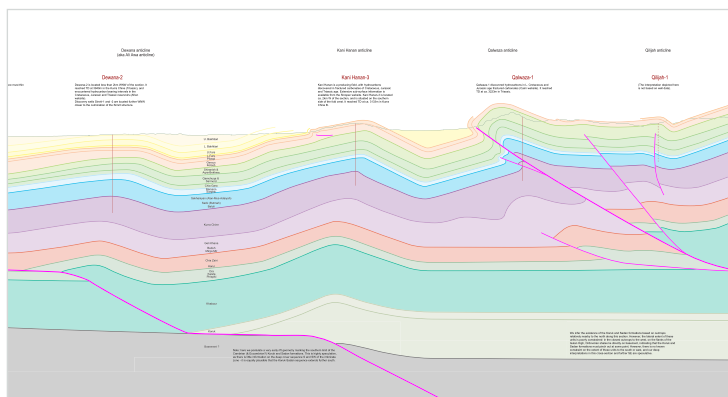
Optional extras include in-house workshops and virtual field trips. Please enquire for further details.



Fieldwork in the Jurassic sequence of central Kurdistan, with Cretaceous cliff section forming the skyline.

Product Contents

- Vector maps spanning 565,000 km² with mapped formations (both polyline boundaries and filled polygon areas) and structural elements (anticlines, synclines, thrusts, faults).
- Additional structural meta-data (alternate anticline names etc.), bedding dips, and shapefiles with type localities.
- 16 annotated, balanced cross-sections with interpretation of sub-surface structure from the suture to foreland, highlighting lateral variation in structural style.
- Stratigraphic chart correlating formations from SE Turkey, NE Syria, Iraq, Iran, Saudi Arabia, UAE, and Oman.
- 50-page report integrating field experience and regional mapping with inferences for regional tectonics, timing, and hydrocarbon systems.
- Integrates detailed data from over 300 published papers, 475 maps, 143 boreholes, 35,000 georeferenced field photos 385 GB of satellite data, and more.



Excerpt from an example balanced cross-section (no vertical exaggeration).

Find out more
geospatial-research.com/zagros

Discuss your needs
richard@geospatial-research.com